

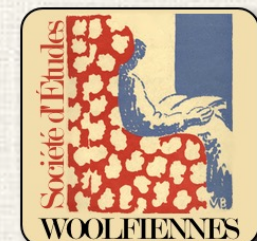
“Virginia Woolf: For a Poetics & Politics of Intimacy”

Thursday May 11th & Friday May 12th 2023
Jean Monnet University, Saint-Etienne, France

International Conference organised by
ECLLA, St Etienne UJM



With the support of the SEW
CORPUS (UR-UPJV 4295) and the AAP



General Map of the “Campus Manufacture” Université Jean Monnet, St Etienne

The conference will take place in Building L
Bâtiment des Forges
11 Rue Dr Rémy Annino, 42000 Saint-Étienne

Contacts

Floriane Reviron-Piégay

floriane.reviron.piegay@univ-st-etienne.fr

+33 6 71 37 18 62

Anne-Marie Smith-Di Biasio

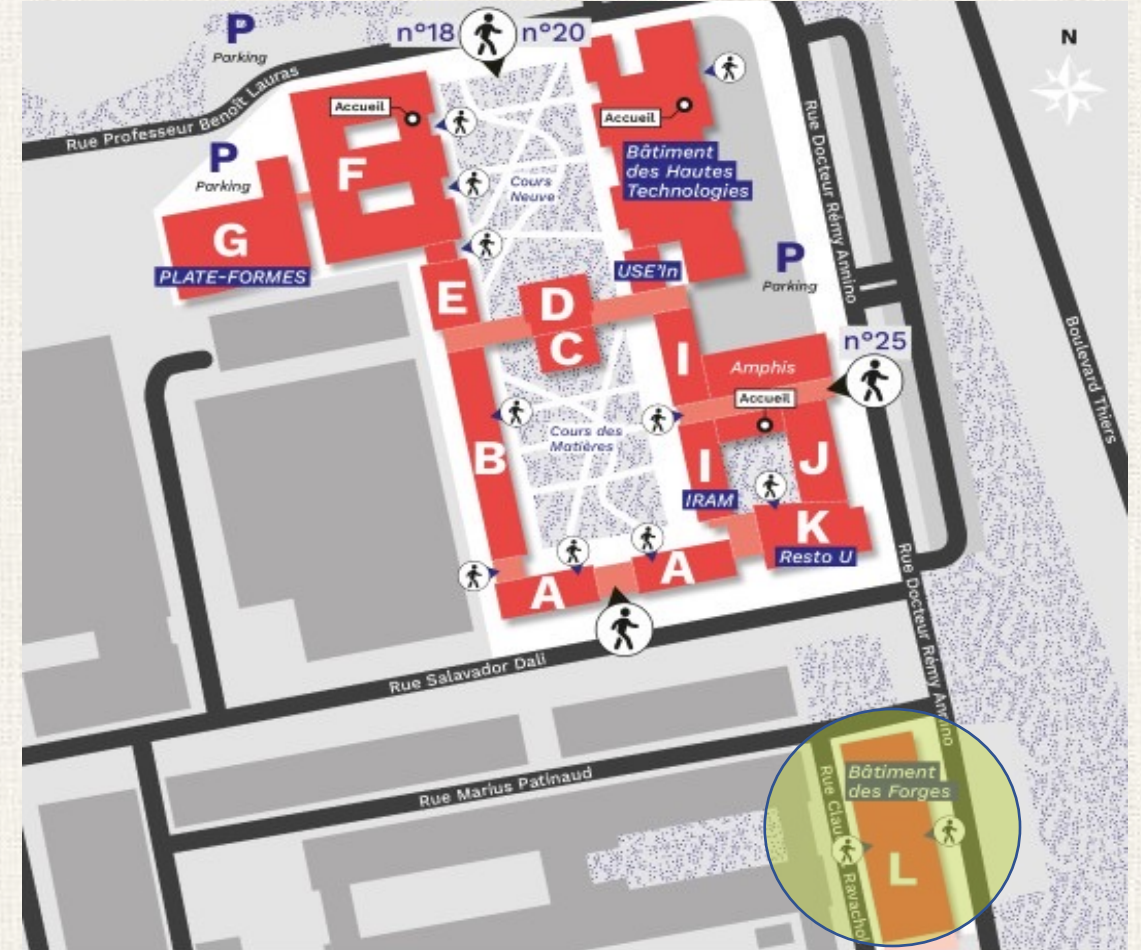
annemarie.dibiasio@gmail.com

+33 6 78 58 95 69

ECLLA Secretary:

Nadine Lévèque-Lair

nadine.lair@univ-st-etienne.fr



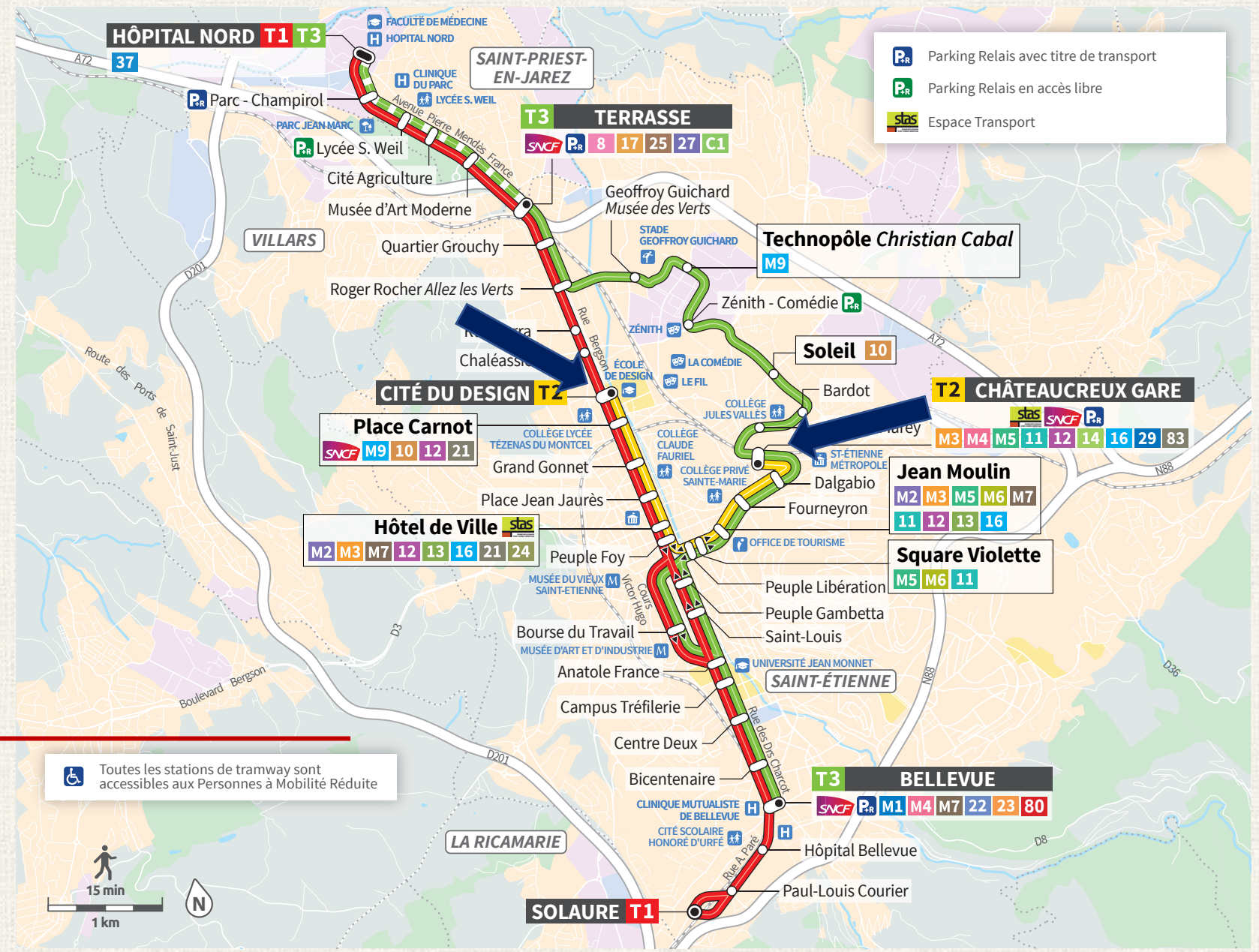
CAMPUS MANUFACTURE

- | | | | |
|-----------|---|----------|--|
| A | Télécom S'-Étienne
• Administration Niv. 1 | I | Télécom S'-Étienne
• Administration
IRAM (RdC) |
| B | Fac. Sciences et
Techniques
• Foyer étudiants
• Scolarité Niv. 1 | J | Télécom S'-Étienne
• Amphi J020-21-22
• Scolarité
• Foyer étudiants
• Bibliothèque |
| CD | Institut Optique
Graduate School | K | Resto'U |
| EF | Lab. Hubert Curien | L | Bâtiment des Forges |
| G | PLATE-FORMES | | |



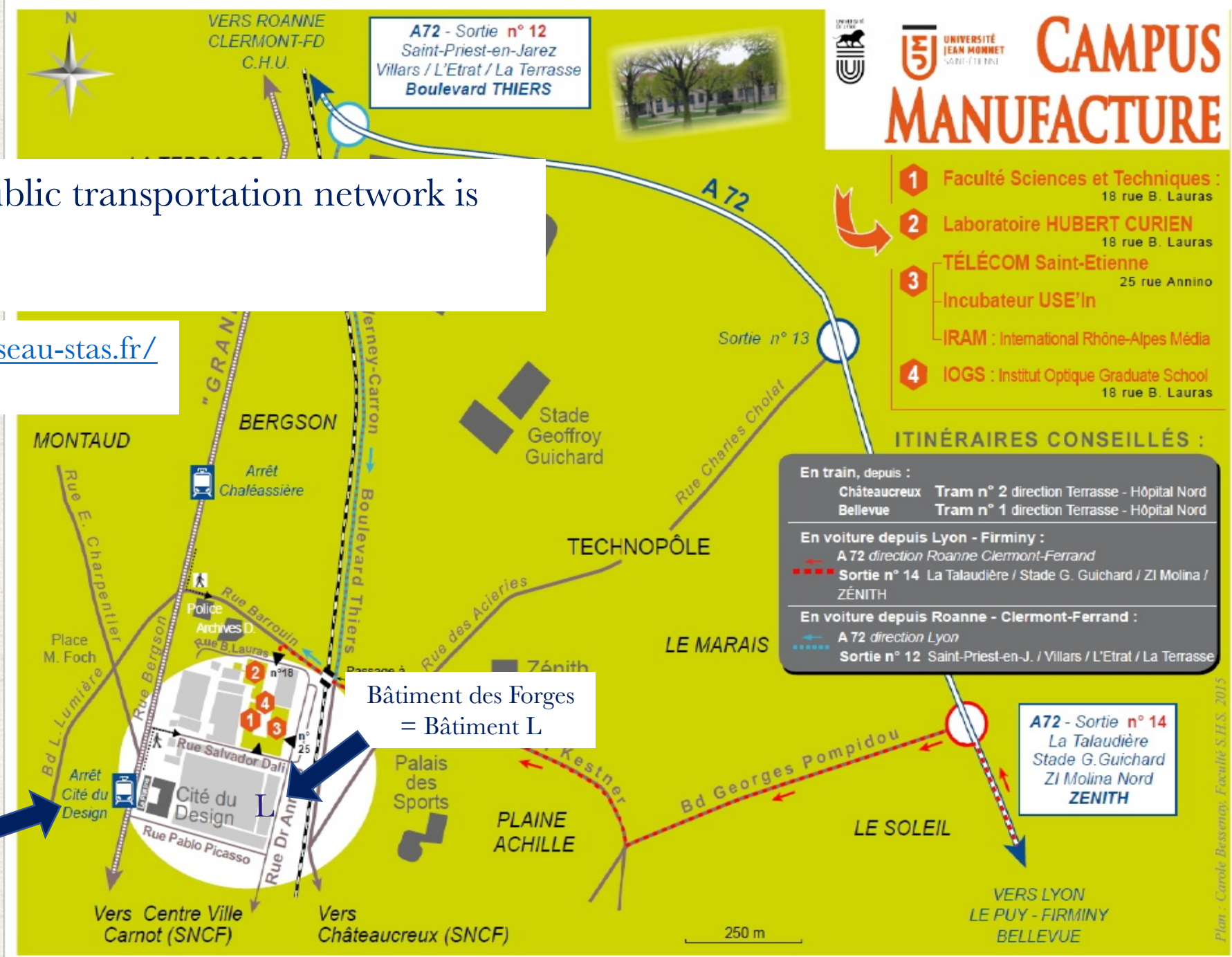
From the railway station
 (“Gare de Châteaureux”) to the Campus Manufacture:
 tramway T2 (yellow itinerary):
 stop at “Cité du Design.”

From the town centre to the
 Campus: either T2 direction
 “Cité du Design”, stop at the
 terminus, or T1 direction
 “Hôpital Nord”, stop at “Cité
 du Design.”



St Etienne public transportation network is the STAS

<https://www.reseau-stas.fr/>



Map of the Campus Manufacture (Bâtiment des Forges) and tramway T2 stops (Cité du Design)

The map displays the Campus Manufacture area in Saint-Étienne, France. The Bâtiment des Forges, Université Jean Monnet, is highlighted with a blue oval. The tramway T2 stop at Cité du Design is also highlighted with a blue oval. A red arrow points from the Cité du Design stop to the Bâtiment des Forges, indicating the shortest walking route. The map includes a search interface with the following options:

- Bâtiment des Forges, Université Jean Mo
- Cité du Design, 42000 Saint-Étienne
- Ajouter une destination

Options:

- Envoyer l'itinéraire vers votre téléphone
- via Rue Salvador Dali: 6 min, 550 m
- via Rue Pablo Picasso et Rue Javelin Pagnon: 8 min, 650 m

Tous les itinéraires sont principalement plats

Map features include:

- Restaurants, Cafés, Épiceries, Activités à découvrir
- Landmarks: Jardin Michel Olagnier, Jardin Maurice Combe, Parc manufacture, Square Victor Schoelcher
- Streets: Rue Bergson, Rue Salvador Dali, Rue Marius-Patenaud, Rue Pablo Picasso, Rue Borle, Rue du Dr Annino, Bd Thiers
- Buildings: Bâtiment des Forges, Université Jean Monnet, La Cité du design, La Fabuleuse Cantine - Restaurant anti-gaspillage, OpenFactory, Le Fablab du Quartier...

Map controls: Calques, Sentiers cyclables, Pistes cyclables, Voies douces, Chemins de terre, 20 m scale bar.

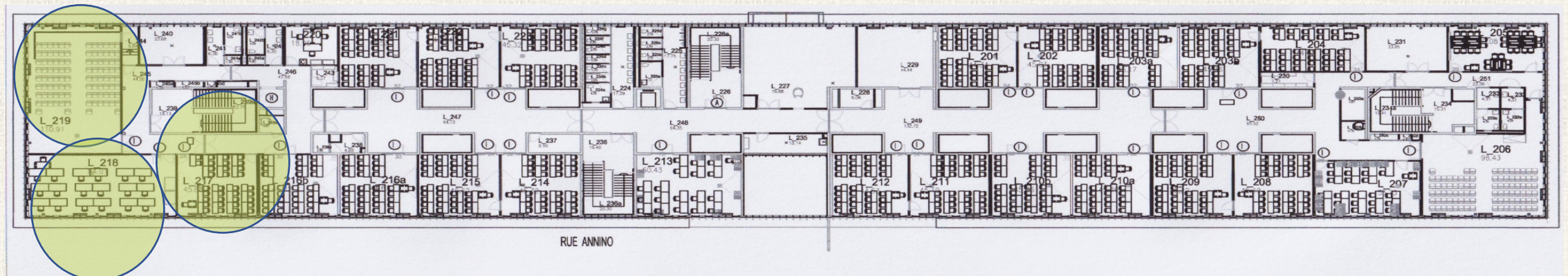
The shortest way is through the “Cité du design”:





Bâtiment des Forges: map of the 2nd floor

The conference will take place mainly in amphitheatre L 219 and in rooms L 217 & L 218



List of hotels: For a comfortable but affordable room of your own...

Ibis Budget St Etienne Centre Gare Chateaucieux
<https://all.accor.com/hotel/B2Q6/index.fr.shtml>

Hotel Furania
<http://www.hotelfurania.com/>

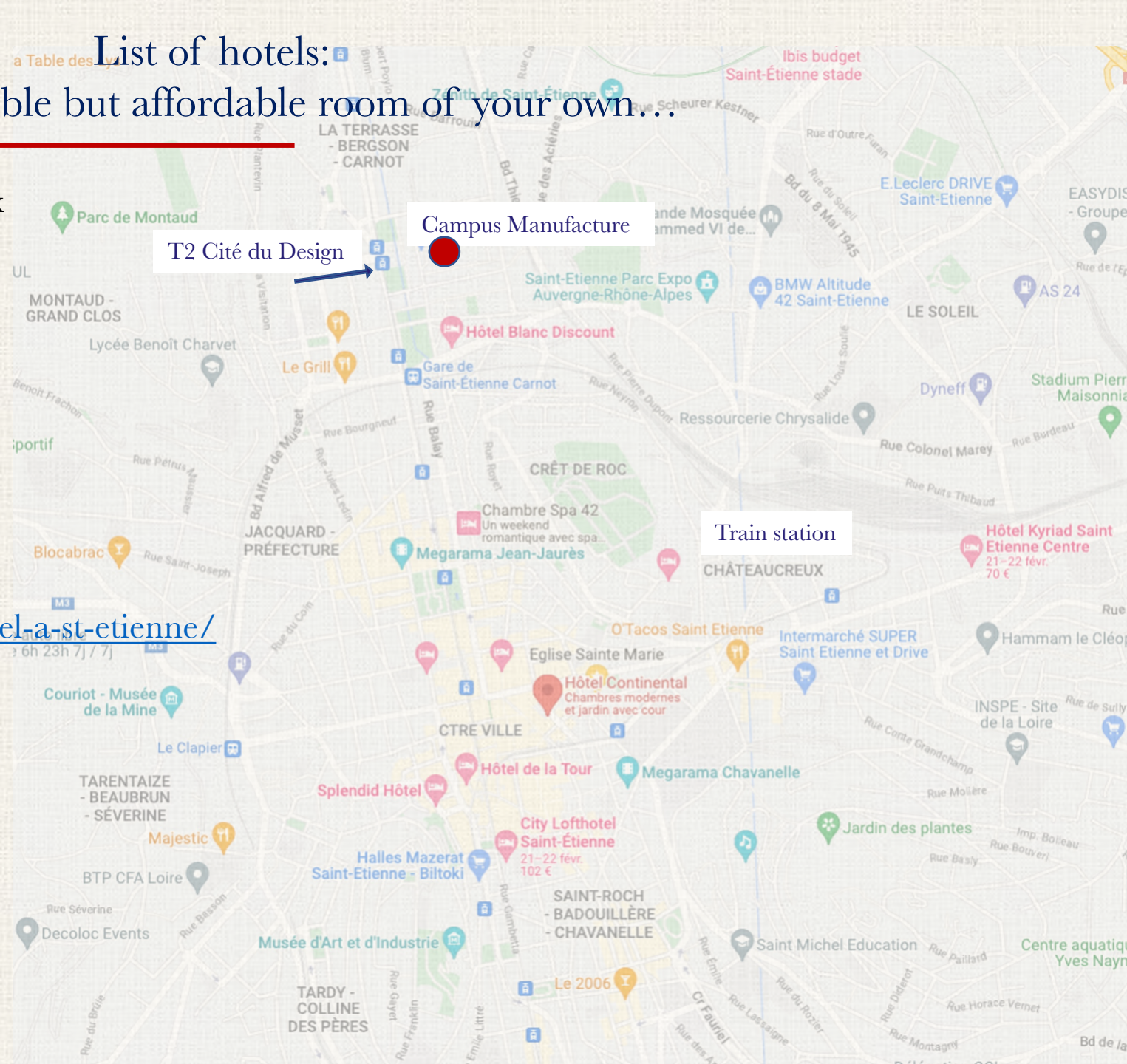
Hôtel du cheval noir
<https://hotel-chevalnoir.fr/>

Résidhotel St Etienne Centre
<https://www.residhotel.com/residence/apparthotel-a-st-etienne/>

Hotel Continental
<https://www.hotelcontinental42.fr/fr/>

Ibis Style St Etienne Chateaucieux
<https://all.accor.com/hotel/1115/index.fr.shtml>

CityLoft Hotel St Etienne
<https://www.cityloftsaintetienne.com/>



For those of you coming from abroad

Either:

Flight to St Exupéry Airport, Lyon.

then Rhône Express Shuttle to Lyon Part Dieu railway station: (a 30-minute ride) <https://www.rhonexpress.fr/>

Or:

Flight to Paris Charles de Gaulle Airport

Then direct connexion to railway station at the airport and TGV to Lyon Part Dieu (2-hour train journey)

<https://www.parisaeroport.fr/en/passengers/access/paris-charles-de-gaulle/train>

The best way to find a cheap train ticket from Paris Charles de Gaulle Airport to Gare de Lyon-Part-Dieu is to book your journey as far in advance as possible and to avoid traveling in the rush hour.

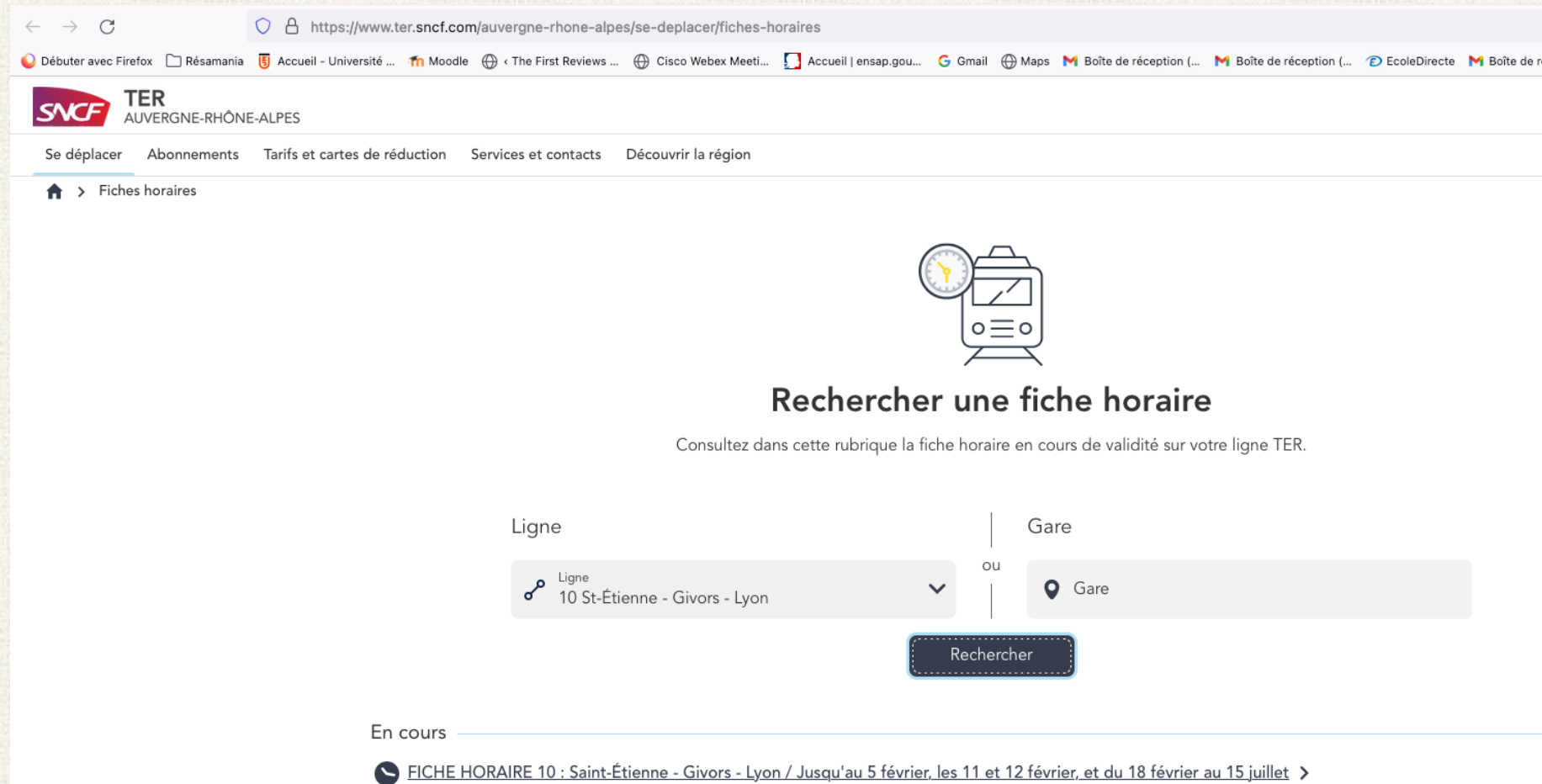
The average ticket from Paris Charles de Gaulle Airport to Gare de Lyon-Part-Dieu will cost around € 68 if you buy it on the day, but the cheapest tickets can be found for only € 52.

Look at the website “snCF connect” to book your train tickets:

<https://www.sncf-connect.com/>

When in Lyon, train to St Etienne Châteaureux from Part Dieu railway station, one train every 30 minutes, a 50-minute journey.

(on the SNCF TER Rhône Alpes website look for line 10 St Etienne-Givors-Lyon, train schedule attached to my e-mail)



The screenshot shows the website <https://www.ter.sncf.com/auvergne-rhone-alpes/se-deplacer/fiches-horaires>. The page features the SNCF TER logo and a navigation menu with options like 'Se déplacer', 'Abonnements', 'Tarifs et cartes de réduction', 'Services et contacts', and 'Découvrir la région'. The main heading is 'Rechercher une fiche horaire' (Search for a timetable), accompanied by an icon of a train and a clock. Below this, a search form is displayed with two input fields: 'Ligne' (Line) and 'Gare' (Station). The 'Ligne' field is set to '10 St-Étienne - Givors - Lyon' and the 'Gare' field is set to 'Gare'. A 'Rechercher' (Search) button is positioned below the form. At the bottom of the page, there is a section titled 'En cours' (In progress) with a link to 'FICHE HORAIRE 10 : Saint-Étienne - Givors - Lyon / Jusqu'au 5 février, les 11 et 12 février, et du 18 février au 15 juillet >'. The browser's address bar and several open tabs are visible at the top of the page.

Looking forward to seeing you soon in St Etienne!
